



MC9100/ MC9200 Series

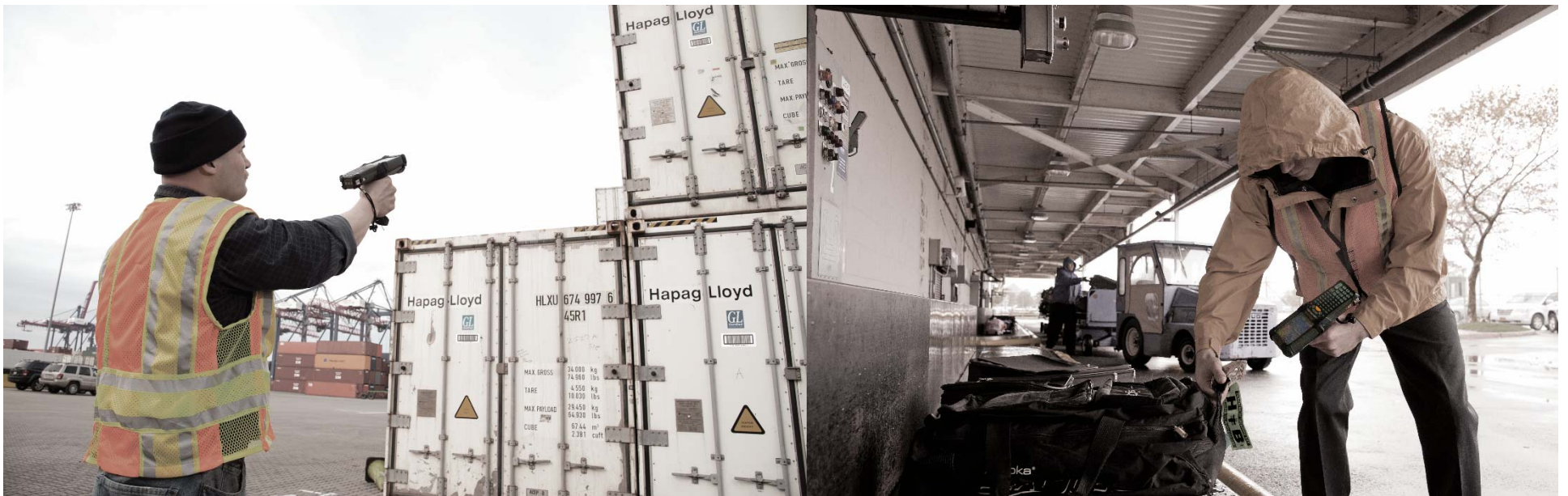
EMC Configuration and Accessories Guide

*Designed to assist customers and partners with model and
configuration guidance*



Contents

- I. MC9100 Series Configuration Guide
- II. MC9200 Series Configuration Guide
- III. MC9100 / MC9200 Series Accessories



MC9100 Configuration Guide



MC9100 Series

CONFIGURATION & ACCESSORY GUIDES are available on [The Source](#) and [PartnerCentral](#)

For access to additional product information including this guide, please visit:

www.zebra.com/mc9190

Find Product Information in the **EMC Product Portfolio** on [The Source](#) and [PartnerCentral](#)



Partner Central

ENTERPRISE MOBILE COMPUTING

EMC PRODUCT PORTFOLIO

- EMC Resources
- Zebra Solutions At A Glance
- Enterprise Mobile Computing
 - Knowledge Worker Portfolio
 - Line Worker Portfolio
 - EMC Software & Solutions
- Topical Content
 - MSI OS Strategy
 - The Value of Enterprise Class Products

CUSTOMER FACING

FIELD MOBILITY

TASK SPECIFIC

INDUSTRIAL MOBILITY

MC9100 Third party accessories:

- www.tsl.uk.com
- www.agoraleather.com



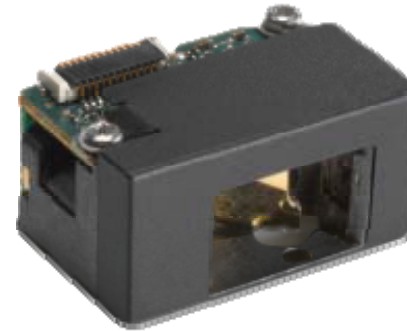
MC9100 Configuration Matrix

CONFIGURATION OPTIONS:	MC91xx	OPTION	DESCRIPTION
Radio Option	MC91 9 x-xxxxxxxxxx	9	WLAN 802.11 a/b/g
Form Factor	MC9190- G xxxxxxxxxx	G	Gun
Data Capture options (Scanner)	MC9190- A xxxxxxxxxx	A	SE960 1D Standard range laser
	MC9190- J xxxxxxxxxx	J	SE1524ER Lorax Long Range Laser
	MC9190- 3 xxxxxxxxxx	3	SE4500 Blockbuster Imager
	MC9190- 5 xxxxxxxxxx	5	SE4500 Blockbuster Imager with DPM
	MC9190- 8 xxxxxxxxxx	8	SE4500 Blockbuster DL Imager for Driver License
	MC9190- 9 xxxxxxxxxx	9	SE4600 Long Range Imager
WAN Carrier options	MC9190-Gx 0 xxxxxxxxxx	0	None
Display	MC9190-Gxx S xxxxxxxxxx	S	Color 3.7" Diagonal (640 x 480 pixels) w/ Touch
Memory options	MC9190-Gxxx W xxxxxx	W	256 MB RAM / 1 GB Flash
Product Feature: User Input/Keyboard	MC9190-Gxxxx A xxxxx	A	28 Key Numeric Keypad
	MC9190-Gxxxx E xxxxx	E	53 Key Alpha-Numeric Keypad
	MC9190-Gxxxx F xxxxx	F	43 Key Numeric Keypad
	MC9190-Gxxxx G xxxxx	G	53 key VT Emulator Keypad
	MC9190-Gxxxx H xxxxx	H	53 key 3270 Emulator Keypad
	MC9190-Gxxxx J xxxxx	J	53 key 5250 Emulator Keypad
Operating System Options	MC9190-Gxxxxx Q xxxx	Q	Windows Mobile 6.5
	MC9190-Gxxxxx Y xxxx	Y	Windows Compact Embedded 6.0
Additional Features	MC9190-Gxxxxxx A6 xx	A6	Audio, Voice, Bluetooth
	MC9190-Gxxxxxx C6 xx	C6	Condensation Resistant with Audio, Voice, Bluetooth
Country or Custom Code	MC9190-Gxxxxxxxx WR	WR	Worldwide ROHS
	MC9190-Gxxxxxxxx JP	JP	Japan
	MC9190-Gxxxxxxxx TN	TN	Tunisia

MC9100 Data Capture Methods

Scan Engines

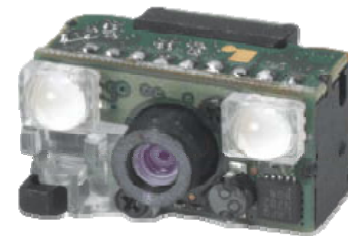
- MC9190-GA** SE961 1D Standard range laser
- MC9190-GJ** SE1524ER Lorax long range laser
- MC9190-G3** SE4500 Blockbuster imager
- MC9190-G5** SE4500 Blockbuster imager with DPM
- MC9190-G8** SE4500 Blockbuster DL imager for driver license
- MC9190-G8** SE4600 Long range imager



MC9190-GA
1D Standard Range Laser



MC9190-GJ
Lorax Long Range Laser



MC9190-G3
MC9190-G5
MC9190-G8
Blockbuster Imager

MC9100 Keypad Options

28 Key Numeric Telephony

Large numeric keys
Alpha character by SMS system

Spare keypad part number:
KYPD-MC9XMR000-01R



43 Key Shifted Alpha

Calculator style numeric
12 direct function keys

Spare keypad part number:
KYPD-MC9XMT000-01R




53 Key Alpha-Numeric

Full alpha-numeric keypad
10 shifted function keys

Spare keypad part number:
KYPD-MC9XMS000-01R



All replacement keypads are available as snap on, can be changed on site, without sending it to service depot. 

MC9100 Keypad Options

3270 Emulator Keypad

Full alpha-numeric
20 shifted function keys

Spare keypad part number:
KYPD-MC9XMV000-01R



5250 Emulator Keypad

Full alpha-numeric
20 shifted function keys

Spare keypad part number:
KYPD-MC9XMW000-01R




VT Emulator Keypad

Full alpha-numeric
20 shifted function keys

Spare keypad part number:
KYPD-MC9XMU000-01R



 The emulator keypads are only used when the MC9190-G is running the respective emulation software, otherwise the functions are same as 53- key keypad.

MC9100 Operating Systems



Microsoft Windows Embedded
Handheld 6.5 Classic Edition

Microsoft Windows
Embedded Compact 6.0



Operating System Configurations

Microsoft Windows Embedded
handheld 6.5 classic edition

Microsoft Windows Embedded
compact 6.0

MC9100 Additional Features



Audio



Voice



Bluetooth

Additional Features

A6 Audio, Voice, Bluetooth

C6 Audio, Voice, Bluetooth,
Condensation Resistant



Condensation Resistant



MC9200 Configuration Guide





MC9200 Series

CONFIGURATION & ACCESSORY GUIDES are available on [The Source](#) and [PartnerCentral](#)

For access to additional product information including this guide, please visit:

www.zebra.com/mc9200

- All MC9200 configurations are compatible and backward compatible with all existing accessories including: Cradles, Holsters and Cables.

Find Product Information in the **EMC Product Portfolio** on [The Source](#) and [PartnerCentral](#)

The graphic is a promotional slide for the 2014 EMC Product Portfolio. It features a blue header with the text 'Partner Central'. Below the header, the main title '2014 EMC PRODUCT PORTFOLIO' is displayed in large, bold, blue letters. To the right of the title, there are four small images illustrating different use cases: 'CUSTOMER FACING' (two women at a counter), 'FIELD MOBILITY' (a person in a green shirt in a store), 'TASK SPECIFIC' (a woman in a blue apron), and 'INDUSTRIAL MOBILITY' (a person in an orange safety vest). On the left side, under the heading 'ENTERPRISE MOBILE COMPUTING', there is a list of resources: 'EMC Resources', 'Zebra Solutions At A Glance', 'Enterprise Mobile Computing' (with sub-items 'Knowledge Worker Portfolio' and 'Line Worker Portfolio'), 'EMC Software & Solutions', 'Topical Content' (with sub-items 'MSI OS Strategy' and 'The Value of Enterprise Class Products').

MC9200 Third party accessories:

- www.vxicorp.com
- www.agoraleather.com



MC9200 Configuration Matrix

CONFIGURATION OPTIONS:	MC92xx	OPTION	DESCRIPTION
Radio Option	MC92N0-xxxxxxNxxxx	N	WLAN 802.11 a/b/g/n
Form Factor	MC92N0-GxxxxxxGxxxx	G	Gun
Data Capture options (Scanner)	MC92N0-GAxxxxxxAxxxx	A	SE965 1D Standard range laser
	MC92N0-GJxxxxxxJxxxx	J	SE1524ER Lorax Long Range Laser
	MC92N0-G3xxxxxx3xxxx	3	SE4500 Blockbuster Imager
	MC92N0-G5xxYxxxxx	5	SE4500 Blockbuster Imager with DPM (Only in Premium Model)
	MC92N0-G8xxYxxxxx	8	SE4500 Blockbuster DL Imager (Only in Premium Model)
	MC92N0-G9xxxxxx9xxxx	9	SE4600 Long Range Imager
	MC92N0-GLxxxxxxLxxxx	L	SE4750SR Imager
	MC92N0-GMxxxxxxMxxxx	M	SE4750MR Imager
	MC92N0-GPxxxxxxPxxxx	M	SE4850 Extended Range Imager
	WAN Carrier options	MC92N0-Gx0xxxxxx0xxxx	0
Display	MC92N0-GxxSxxxxxxSxxxx	S	Color 3.7" Diagonal (640 x 480 pixels) w/ Touch
Memory options	MC92N0-GxxxXxxxxxxXxxxx	X	512 MB RAM / 2 GB Flash (Standard Model Config)
	MC92N0-GxxxYxxxxxxYxxxx	Y	1GB RAM / 2 GB Flash (Premium Model Config)
Product Feature: User Input/Keyboard	MC92N0-GxxxxAxxxxxxAxxxx	A	28 Key Numeric Keypad
	MC92N0-GxxxxExxxxxxExxxx	E	53 Key Alpha-Numeric Keypad
	MC92N0-GxxxxFxxxxxxFxxxx	F	43 Key Numeric Keypad
	MC92N0-GxxxxGxxxxxxGxxxx	G	53 key VT Emulator Keypad
	MC92N0-GxxxxHxxxxxxHxxxx	H	53 key 3270 Emulator Keypad
	MC92N0-GxxxxJxxxxxxJxxxx	J	53 key 5250 Emulator Keypad
	MC92N0-GxxxxVxxxxxxVxxxx	V	53 key High Visibility White Keys (Only in Premium Model)
	Operating System Options	MC92N0-GxxxxQxxxxxxQxxxx	Q
MC92N0-GxxxxRxxxxxxRxxxx		R	Windows Mobile 6.5 Without MS Office
MC92N0-GxxxxYxxxxxxYxxxx		Y	Windows Compact Embedded 7.0
MC9290-GxxxxAxxxxxxAxxxx		A	Android KitKat 4.4 • <i>Android configurations do not support the SE4600 engine</i>
Additional Features	MC92N0-GxxxxxA5xxx	A5	Audio, Voice and Bluetooth
	MC92N0-GxxxxxA6xxx	A6	Audio, Voice, Bluetooth and IST (Only in Premium Model)
	MC92N0-GxxxxxC6xxx	C6	Condensation Resistant with Audio, Voice, Bluetooth, IST (Only in Premium Model)
Country or Custom Code	MC92N0-GxxxxxxXxxxx	XX	WR = Worldwide ROHS; IN = India only

MC9200 Configurations Available



MC9200 Variants

Standard

Memory:

- 512MB RAM / 2GB Flash Memory

Operating Systems:

- Windows CE 7.0
- Windows Embedded Handheld 6.5.X

Premium

Increased memory:

- 1GB RAM / 2GB Flash Memory

Operating Systems:

- Windows CE 7.0
- Windows Embedded Handheld 6.5.x with Microsoft Office (Office removed on premium configurations built after July 1, 2016)
- Android Kit Kat 4.4

Added features:

- Integrated RFID tag (for asset management)
- 53 High Visibility Keypad

Other Options:

- DL scan engine, DPM scan engine, Condensation Resistant

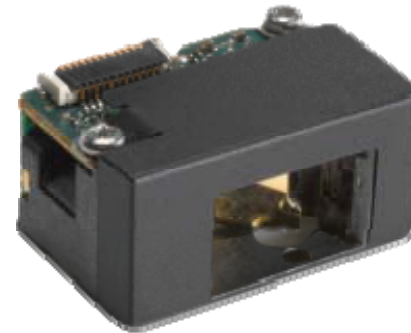
MC9200 Data Capture Methods

Scan Engines

- MC92N0-GA** SE965 1D Standard Range laser
- MC92N0-GJ** SE1524ER Lorax Long Range 1D laser
- MC92N0-G3** SE4500 Blockbuster imager
- MC92N0-G5** SE4500 Blockbuster imager with DPM
- MC92N0-G8** SE4500 Blockbuster DL imager for driver license
- MC92N0-G9** SE4600 Long Range imager
- MC92N0-GL** SE4750 Megapixel Standard Range imager
- MC92N0-GM** SE4750 Megapixel Medium Range imager
- MC92N0-GP** SE4850 Extended Range imager



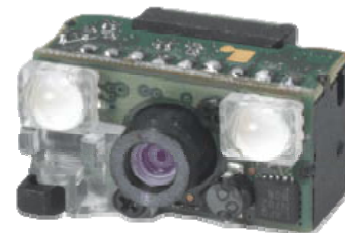
-G5, -G8, -GL and -GM available in Premium models only



MC92N0-GA
SE965 1D
Standard Range Laser



MC92N0-GJ
SE1524 Lorax 1D
Long Range Laser



MC92N0-G3
MC92N0-G5
MC92N0-G8
SE4500 2D
Blockbuster Imager

MC9200 Keypad Options

28 Key Numeric Telephony

Large numeric keys
Alpha character by SMS system

Spare keypad part number:
KYPD-MC9XMR000-01R



43 Key Shifted Alpha

Calculator style numeric
12 direct function keys

Spare keypad part number:
KYPD-MC9XMT000-01R



53 Key Alpha-Numeric

Full alpha-numeric keypad
10 shifted function keys

Spare keypad part number:
KYPD-MC9XMS000-01R



All replacement keypads are field replaceable and can be changed on site without sending it to service depot.



MC9200 Keypad Options

3270 Emulator Keypad

Full alpha-numeric
20 shifted function keys

Spare keypad part number:
KYPD-MC9XMV000-01R



5250 Emulator Keypad

Full alpha-numeric
20 shifted function keys

Spare keypad part number:
KYPD-MC9XMW000-01R



VT Emulator Keypad

Full alpha-numeric
20 shifted function keys

Spare keypad part number:
KYPD-MC9XMU000-01R



The emulator keypads are only used when the MC92N0-G is running the respective emulation software, otherwise the functions are same as 53 key keypad.

MC9200 Operating Systems



Microsoft Windows Embedded Handheld 6.5.3 Professional Edition



Microsoft Windows Embedded Compact 7.0

Operating System Configurations

Microsoft Windows Embedded Handheld 6.5.3 professional edition

- With Microsoft Office (only on premium configurations shipped prior to July 1, 2016)
- Without Microsoft Office

Microsoft Windows Embedded Compact 7.0

Android Kit Kat 4.4.0



Android Kit Kat 4.4

MC9200 Additional Features

Additional Features

- A5** Audio, Voice, Bluetooth
- A6** Audio, Voice, Bluetooth
Interactive Sensor Technology
- C6** Audio, Voice, Bluetooth,
Interactive Sensor Technology
Condensation Resistant



A6 and C6 available in Premium models only

Microphone removed on units manufactured (MFD) after July 1, 2016. Voice support provided via cabled or Bluetooth headset.



Audio



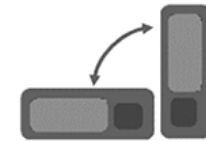
Voice



Bluetooth



Condensation Resistant



Interactive Sensor Technology
3-axis Accelerometer



MC9100 MC9200 Accessories Guide



Step 1: Choose a charging method



Single Slot Cradle:

CRD9000-1001SR Single slot USB / RS232 Cradle, w/spare battery charger. **Requires:** Power Supply PWR-BGA12V50W0WW, DC Line Cord CBL-DC-388A1-01 and Country Specific 3 wire AC Line Cord.

Single Slot Cradle Kits:

CRD9000-111SES (INTERNATIONAL) **Includes:** Single Slot Cradle CRD9000-1001SR, Level VI Power Supply PWR-BGA12V50W0WW and DC Line Cord CBL-DC-388A1-01. Must purchase 3 wire AC Cord separately.

CRD9000-110SES (US) **Includes:** Single Slot Cradle CRD9000-1001SR, Level VI Power Supply PWR-BGA12V50W0WW, DC Line Cord CBL-DC-388A1-01, and US AC Cord 23844-00-00R.



The single slot cradle can charge a MC9190-G/MC92N0 gun, charges a spare battery and has USB master and slave connections.

Additional Accessories for Single Slot Cradle



25-64396-01R

USB Cable for the cradle to the host system



25-63852-01R

Provides serial communication between the single slot cradle and a host computer.



PWR-BGA12V50W0WW

Level VI AC/DC Power Supply (Brick, replacement for PWR-S-14000-148R)

AC Input: 100-240V, 2.4A

DC Output: 12V, 4.16A, 50W

Requires: DC line cord and Country specific grounded AC line cord.



CBL-DC-388A1-01

DC Line Cord for running the single slot cradles or battery chargers from a single Level VI power supply PWR-BGA12V50W0WW, Level VI replacement for PWR-S-14000-148R.



23844-00-00R

US AC line cord, 7.5 feet long, grounded, three wire for power supplies.



25-63856-01R

Modem adapter cable used to connect the MDM9000-100R to the single slot cradle



Step 1: Choose a charging method



4 Slot Cradles:

CRD9101-4001CR 4 Slot Charge Only Cradle

CRD9000-4001ER 4 Slot Ethernet Cradle

4 Slot Cradle Kits:

CRD9101-411CES
(INTERNATIONAL)

Includes: 4 Slot Charge Only Cradle CRD9000-4001ER, Level VI Power Supply PWR-BGA12V108W0WW and DC Cord CBL-DC-381A1-01. Must purchase 3 wire AC Cord separately.

CRD9000-411EES
(INTERNATIONAL)

Includes: 4 Slot Ethernet Cradle CRD9000-4001ER, Level VI Power Supply PWR-BGA12V108W0WW and DC Cord CBL-DC-381A1-01. Must purchase 3 wire AC Cord separately.

CRD9000-410EES
(US)

Includes: 4 Slot Ethernet Cradle CRD9000-4001ER, Level VI Power Supply PWR-BGA12V108W0WW, DC Cord CBL-DC-381A1-01 and US AC Cord 23844-00-00R.

Additional Accessories for 4-slot Cradles



PWR-BGA12V108W0WW

Level VI AC/DC Power Supply (Brick, Replacement for PWRS-14000-241R)

AC Input: 100-240V, 2.8A

DC Output: 12V, 9A, 108W

Requires: DC line cord and Country specific grounded AC line cord.



CBL-DC-381A1-01

DC Line Cord for running multi-slot cradles from a single Level VI power supply PWR-BGA12V108W0WW, Level VI replacement for PWRS-14000-241R

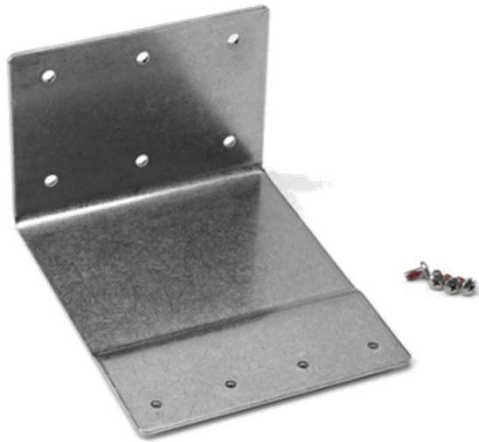


23844-00-00R

US AC line cord, 7.5 feet long, grounded, three wire for power supplies.

Step 1: Choose a charging method

Wall Mounting Bracket



KT-61498-01R

Wall mounting bracket, order one for a single slot cradle on one for the 4 slot battery charger, order two for 4 slot cradles. Must purchase the cradle bracket separately to install the cradle on the wall mount bracket.

Cradle Bracket



KT-61499-01R

Cradle Bracket, order one for a single slot cradle and one for the 4 slot battery charger, order two for 4 Slot Cradles. Attaches to the bottom of the cradle and is required to install the cradle on the wall mounting bracket.

Step 1: Choose a charging method



Forklift Cradle:

FLC9000-1001R

Provides a secure mounting solution, equipped with rugged RS232 and USB ports capable of powering and communicating with tethered devices.

! The forklift cradle allows USB and RS232 connectivity between a docked MC9190-G/MC92N0-G and external devices such as scanners or printer (additional cables required)

Forklift Cradle Kits:

KT-FLC9000-LV Includes Fork Lift Cradle (FLC9000-1001R), Low Voltage Power Converter (PWRS-14000-252R) and Power Cable (25-103873-01R)

KT-FLC9000-HV Includes Fork Lift Cradle (FLC9000-1001R), High Voltage Power Converter (PWRS-14000-251R), Power Cable (25-103872-01R)

! Must purchase separately:

- Specific power converter : PWRS-14000-252R for low voltage or PWRS-14000-251R for high voltage
- Power input cable :25-103872-01R

Additional Accessories for Forklift Cradle



PWRS-14000-251R

Fork Lift High Voltage Power Converter from 18-75VDC to 12VDC



PWRS-14000-252R

Fork Lift Low Voltage Power Converter from 9-30VDC to 12VDC



25-103872-02R

Forklift power input cable



25-71917-02R

RS232 Cable, coiled 9' extended, rugged amphenol connector.



25-71918-01R

USB Cable, coiled 9' extended, rugged amphenol connector

Step 2: Choose battery / battery charging accessories

2600 mAh Battery



BTRY-MC9X-26MA-01
MC9090, MC9190, MC9200
PowerPrecision Spare
Lithium Ion battery, 2600 mAh

Pack of 10 spare batteries is also available:
(BTRY-MC9X-26MA-10)

Spare Battery Charging Options:



CRD9000-1001SR
Single Slot Serial / USB Cable
with spare battery charging



SAC9000-4000R
4-slot battery charger, charges
four spare batteries.

Accessories for 4-slot Battery Charger:



25-72614-01R
DC Line Cord for 4-Slot Battery Charger



PWRS-14000-242R
Power supply for 4-Slot Battery Charger



23844-00-00R
US AC line cord, 7.5 feet long, grounded,
three wire for power supplies.

4-slot Battery Charger Kits:

SAC9000-400CES US kit. Includes: 4-slot battery charger SAC9000-4000R, power supply PWRS-14000-242R, DC line cord 25-72614-01R and US AC line cord 23844-00-00R.

KIT-SAC9000-4001ES International kit. Includes 4-slot battery charger SAC9000-4000R, power supply PWRS-14000-242R and DC line cord 25-72614-01R, must purchase country specific AC line cord separately.

Step 3: Choose charging cables/adapters

Cable Adapter Module



ADP9000-100R
(3.3v - 500mAh) provides communication to the host or printer and can be used for AC charging

Cable options for ADP9000-100R:



25-62166-01R
USB Cable for Cable for adapter module



25-62168-01R
Paxar printer cable for adapter module



25-62167-02R
DEX cable for adapter module



25-62169-01R
O'Neil printer cable for adapter module



25-62167-03R
DEX cable w/ floating jack screws for adapter module



25-62170-02R
Zebra printer cable for adapter module

Other adapter modules and kits:

KT-ADP9000-100ES Includes: ADP9000-100R, Level VI Power Supply PWR-BGA12V50W0WW, DC Line Cord CBL-DC-388A1-01, and US AC Cord 23844-00-00R.

ADP9000-110R (5VDC - 350mA) for use with long range scanner LS3408ER

ADP9000-120R (5VDC - 350mA) for use with Apriva BT200 Reader



VCA9002-12R Auto charge cable 12V for adapter module

VCA9000-24R Auto charge cable 24V for adapter module

Step 4: Choose carrying accessories

Holsters



SG-MC9121112-01R

Soft material holster for gun configurations only



SG-MC9027242-01R

Holster for use with Tethered Cac Solution And Aprivia Bluetooth Bt200

Heated Boot



SG-MC9024242-01R

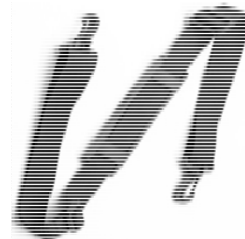
Allows device to be used in Freezer Applications.



Heated Boot requires 4 AA batteries for the heating element, not provided with the unit

Shoulder strap
58-40000-007R

Universal shoulder strap for holster.



Protective Boot



11-67218-04R

Protective boot for gun configurations only

Belt for holster
11-08062-02R

Universal belt for fabric holster.



Step 5: Choose other accessories

Audio

RCH51

Rugged wired headset designed for use in nearly any environment

25-124387-02R

RCH51 headset adapter cable to standard 3-pole 2.5mm barrel jack.

Belt Clip Kit

KT-70147-01R

Belt clip kit is designed to hold the mobile computers firmly in place while on the move.



RCH51
Rugged Wired Headset

Must purchase headset adapter cable separately, 25-124387-02R

KT-70147-01R
Belt Clip Kit

Step 5: Choose other accessories

Plastic Screen Guards

KT-151827-03R Pack of 3 screen guards

KT-151827-500R Pack of 500 screen guards

**KIT-MC9X-
SCRP1L-50** Laminate exit window overlay for use
in food processing environment-
Pack of 50

Hand straps

KT-66447-03R Replacement hand straps - Pack of 3

Stylus Kits

KT-68144-10R Replacement grey stylus - Pack of 10

KT-68144-50R Replacement grey stylus - Pack of 50



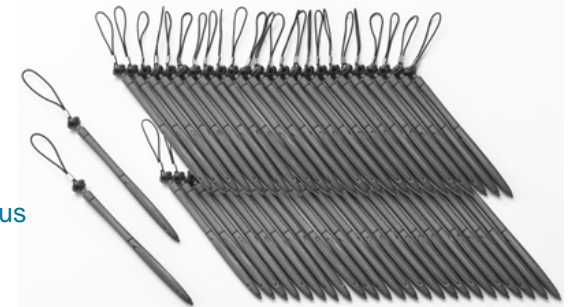
KT-151827-03R
Plastic Screen Guards



KT-66447-03R
Replacement Hand straps



KT-68144-10R
Replacement Grey Stylus



KT-81680-50R
Replacement Grey Stylus
with tether

Step 5: Choose 3rd Party accessories

These accessories are certified through the Independent Hardware Vendor (IHV) Program, for pricing and ordering inquiries contact the corresponding vendor directly.

Bluetooth Headsets (for MC9200 only)

- B250XT+** VXi Corp Bluetooth Wireless Headset
- Expressway II** VXi Corp Bluetooth Wireless Headset

Forklift Ballistic Holster

- Y6911DWSP** Agora Edge, Ballistic Nylon Holster for Forklift, Vehicle or Wall Mounting

Card Reader (For MC9100 only)

- 1139-01-SO-MC9X00-CAC**
TSL Common Access Card (CAC) Reader capable of reading Common Access Cards (CAC) as well as Smart Cards compliant with ISO7816-1,2,3,4.

Bluetooth Headsets for WBA/VDP use case only !



B250-XT+
Bluetooth Headset for MC9200



Expressway II
Bluetooth Headset for MC9200



Y6911DWSP
Ballistic Holster for Forklift



1139-01-SO-MC9X00-CAC
TSL Common Access Card reader for MC9100